

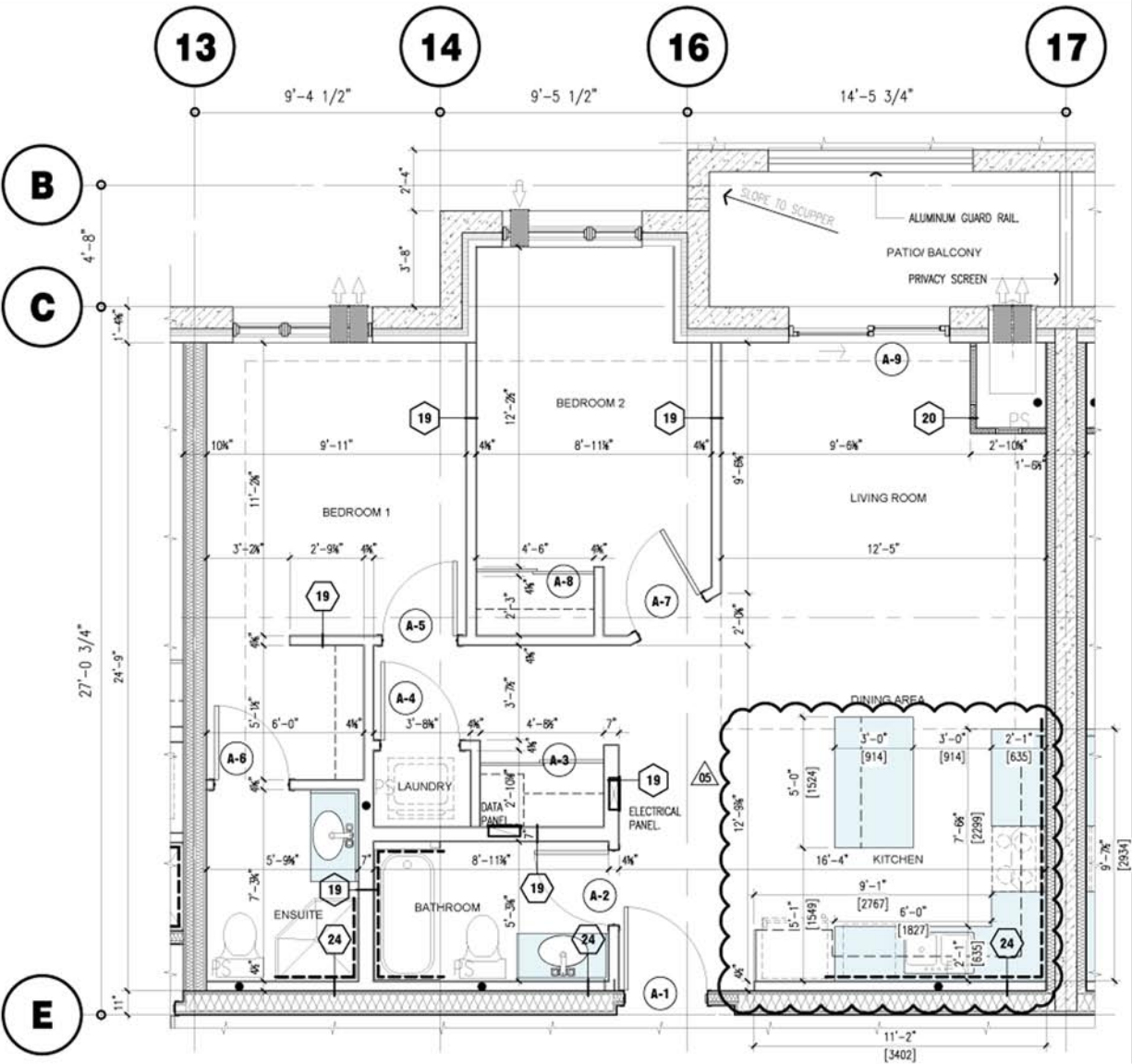
- CERAMIC WALL TILE.
1. ALL KITCHENS TO HAVE TILE BACKSPLASH.
 2. TUB TO HAVE CERAMIC TILE SURROUND ON MOISTURE RESISTANT BOARD.

COORDINATE KITCHEN MILLWORK W/ MILLWORK SUPPLIER SHOP DRAWINGS. ALL KITCHEN MILLWORK TO INCLUDE A BANK OF DRAWERS, AND 24" BUILT OUT CABINETS OVER FRIDGE.

GRAB BAR BLOCKING IS TO BE INSTALLED AS REQUIRED BY CODE TO THE APPROPRIATE LOCATIONS

ROOM	ROOM AREA	GLAZING AREA	PERCENTAGE
LIVING/ DINING ROOM	194 sq. ft.	39.03 sq. ft.	20%
BEDROOM 1	120 sq. ft.	25.00 sq. ft.	20%
BEDROOM 2	90 sq. ft.	25.00 sq. ft.	28%

TYPICAL NOTE (SEE DETAILS):
STUD WALL REINFORCEMENT
(1) IF WOOD WALL STUDS OR SHEET STEEL WALL STUDS ENCLOSE THE MAIN BATHROOM IN A DWELLING UNIT, REINFORCEMENT SHALL BE INSTALLED TO PERMIT THE FUTURE INSTALLATION OF THE FOLLOWING:
(a) FOR A WATER CLOSET, A GRAB BAR DESCRIBED IN CLAUSES 3.8.3.8.(3)(A) AND A GRAB BAR DESCRIBED IN CLAUSE 3.8.3.8.(3)(C).
(b) FOR A SHOWER, A GRAB BAR DESCRIBED IN CLAUSE 3.8.3.13.(2)(7), AND
(c) FOR A BATHTUB, A GRAB BAR DESCRIBED IN CLAUSE 3.8.3.13.(4)(C).



1

SUITE 'A' PLAN

scale: 1/4" = 1'-0"